

***TECHNICAL SHEET AND
PRICELIST
ENGINEERED FLOOR – DOUBLE
LAYER***



Quality

The quality of the KORMOS brand products is attested by the most important authorities such as CE , FSC .



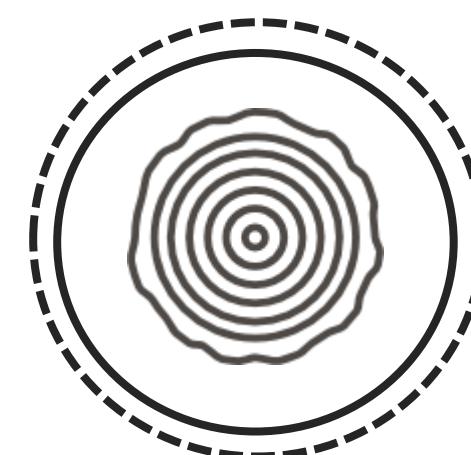
Tradition

With over 40 years of experience in the field, KORMOS exploits raw materials using the most advanced technological line, distributes and exports solid oak, ash parquet ,engineered parquet , and other European types of wood.



Technology

KORMOS 's main goal is the perfection of its products . We achieve it through our perfect machinery , the constant training of our staff and the implementation of modern production methods .



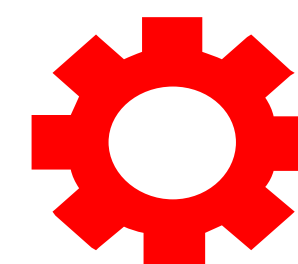
100% Wood

The wooden floors give credence to classic or modern and definitely noble and warm profile to professional venues or houses.

GENERAL CHARACTERISTICS



THE DOUBLE LAYER FLOOR is made by overlapping two layers of wood, oak and birch, with a heavy layer of 3.2 / 3.4 mm thick solid oak top layer and a high performance stability support layer of 10 mm thick **phenolic birch plywood**. Oak wood (Quercus spp.) comes from its own forestry exploitation in Romania, it is a hardwood species of deciduous tree, with high durability against aggressive factors. This new double-layer floor is made in a wide variety of colors, sizes and qualities.



FIELD OF USE

THE DOUBLE LAYER FLOOR is used for interior floors, heavy traffic, with superior selectivity requirements for outstanding design, remarkable technical performance, reliability, durability, thermal and acoustic comfort, eco-sanogenic properties.

BOTANICAL SPECIFICATIONS

Denomination	European Oak
Botanical denomination	Quercus Petraea Liebl.
Vegetation geographical area	Central and Western Europe
Wood weaving	Coarse\gross
Graining	Straight
Mass density at 12% humidity	600/800 kg/m ³
Shrink	Medium
Dimensional stability	Medium-high
Hardness(Brinell penetration)	Medium-high
Durabilty (resistance to Fungus and bugs attacks)	Excellent for heartwood Mediocre for sapwood
Oxidation	Medium low , tends to conform from a yellowbrown to a Golden Yellow .



TECHNICAL QUALITY CONDITIONS

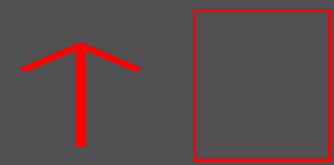
Quality standard: SR EN 13489:2003 Wood floors.

Elements of engineered multilayer floor

Deviations %	$\pm 0,2$ length ; $\pm 0,1$ width
Moisture content %	7...11
Durability	Class 1 (SR EN 335)
Warranty, years	20/EXTRA; 15/NATUR; 10/BR; 5/EXTRA D, installed and maintained properly, excluding natural durability
Storage & Exploitation	18-25° C, RH 45-60%. To be kept sealed in the original package until installation!
Installation & Maintenance	According to the Installation Guide & Maintenance Guide



DIMENSIONAL SPECIFICATIONS



Width

130 / 165 / 190 mm



Length

500 mm – 2200 mm



Thickness

13.2 mm / 13.4 mm



Top Layer (oak)

3.2 mm / 3.4 mm

EDGES MACHINING

The double-layer floor is manufactured with beveled edges, with tongue & groove joint on all sides .

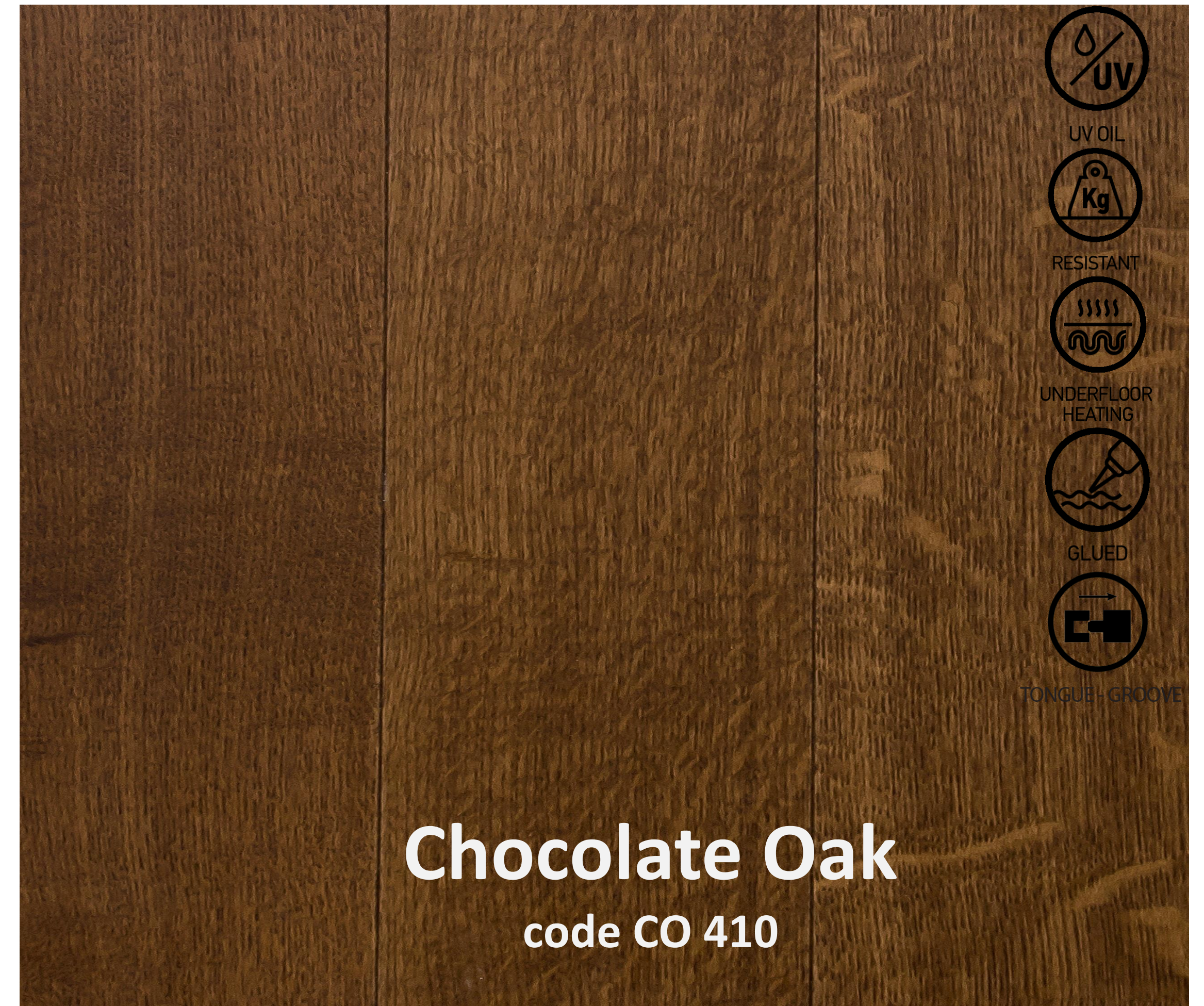
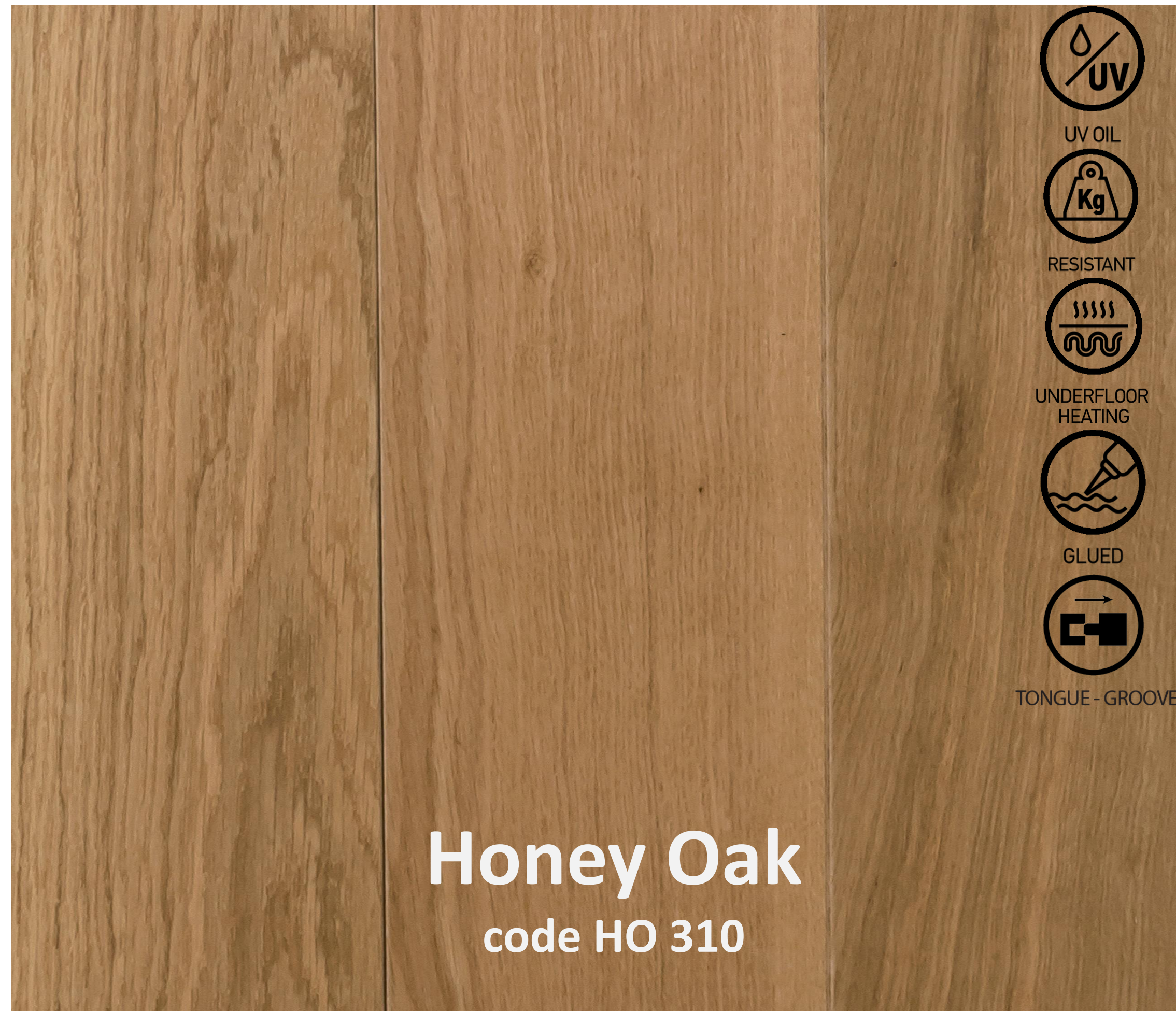


OUR COLLECTION

Engineered parquet is delivered unfinished, or finished with 5 types of UV oil:



OUR COLLECTION



OUR COLLECTION



OUR COLLECTION



Unfinished
Herringbone oak
code HE 710



Finished Herringbone
Honey oak
code HE 810

QUALITY GRADES

EXTRA

Small and sound knots up to 5 mm of diameter. No sapwood. Relatively uniform colors.



NATUR

Filled knots up to 20 mm, light sapwood, variation of colors, slight stress cracks are possible.



QUALITY GRADES

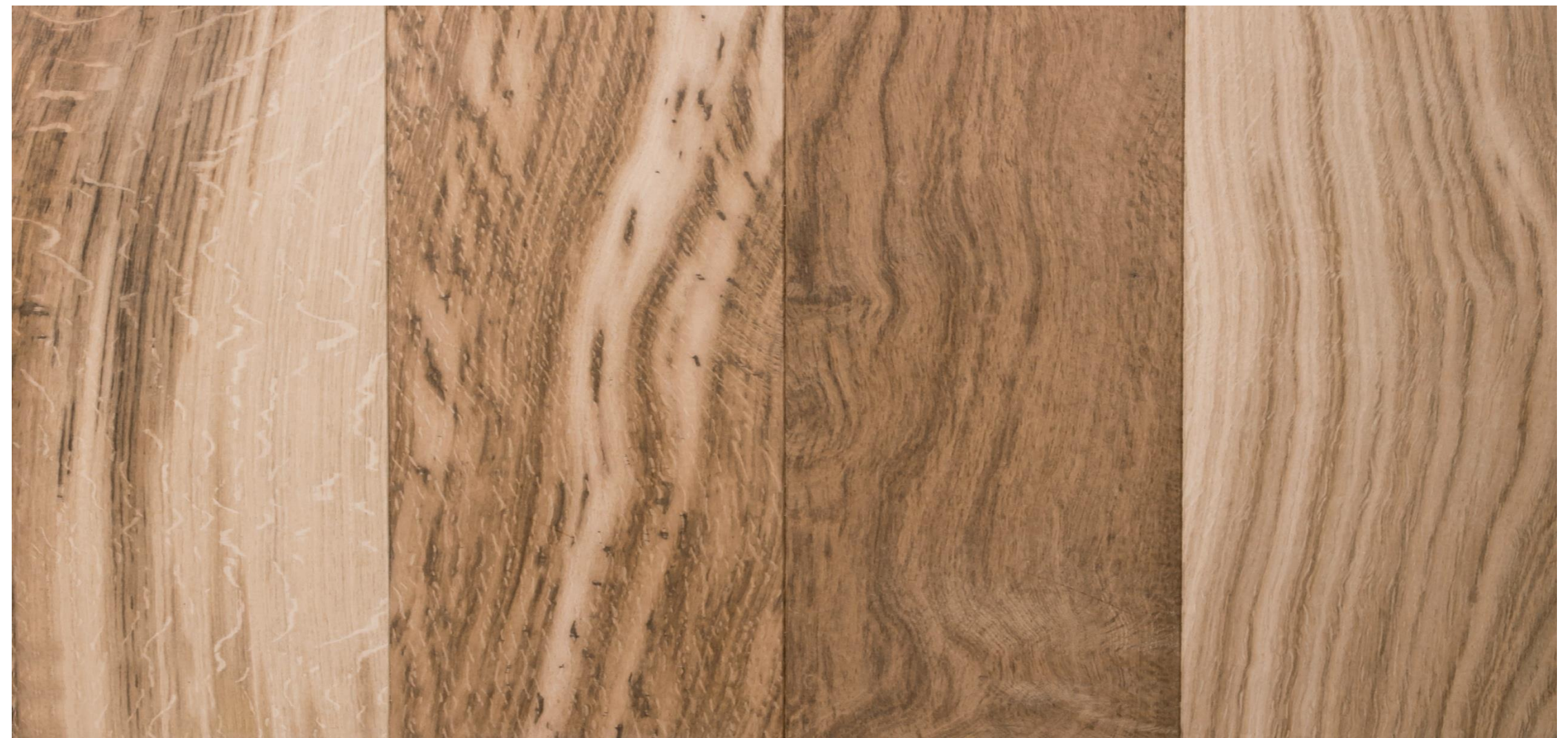
BR

Sound knots up to 60 mm , filled knots up to 40 mm, filled cracks are allowed, sapwood , discoloration allowed.



EXTRA D

It allows knots up to 30 mm , discoloration are allowed.

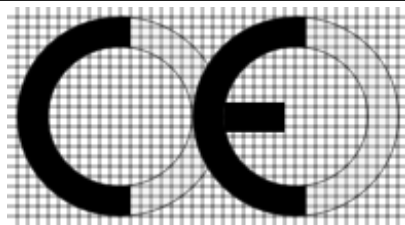


SURFACE TREATMENT



- ✓ To preserve the quality and beauty of your floor we recommend using Teflon furniture glides (PTFE) under chairs and furniture legs and doormats in entrances.
- ✓ Chair castors and office roller chairs must comply with standard EN 12529 .
- ✓ Use only lined rollers of type W (soft).
- ✓ It is also a good idea to use polycarbonate mats as underlay for armchairs and office chairs.
- ✓ Please note: Always wring out the cloth or mop very well before wiping the floor.
- ✓ DO NOT wet mop the parquet surface and NEVER leave puddles or standing water!

ENGINEERED FLOOR- CE Marking:



SC KORMOS IMPEX SRL
18

EN 14342:2013
ENGINEERED FLOOR
OAK, QUERCUS SPP./BIRCH PLYWOOD
(EN 13489:2003)

Fire reaction	Dfl-s1/Cfl-s1
Densitaty	500/700 kg/m³
Thickness	13/13,4 mm
Formaldehyde emission	E1
Slip resistance	NPD
Thermal resistivity	0,17 W/mK
Durability	Class 1, EN 335
Finition	Unfinished/Finished: UV Oil



KORMOS IMPEX SRL obtained the FSC-STD-40-004 V3–O EN Certification.
Chain of custody certification to guarantee the origin of the material
from forest which are managed according to the strict environmental,
social and economic standards required.

CERTIFICATIONS



Il marchio della gestione forestale responsabile
FSC® A000532

The mark of responsible forestry
FSC® A000532

CERTIFICATO N. RINA-COC-000273

CERTIFICATE No.

SI CERTIFICA CHE LA CATENA DI CUSTODIA DI
IT IS HEREBY CERTIFIED THAT CHAIN OF CUSTODY OF

KORMOS IMPEX SRL

Bulevardul Nicolae Titulescu, nr. 119, Parter, Camera 1, Bloc 3, Sector 1, Bucuresti, Romania

NELLE SEGUENTI UNITA' OPERATIVE / IN THE FOLLOWING OPERATIONAL UNITS

Localitatea Visina, Judetul Dambovita, Romania

E' CONFORME ALLA NORMA / IS IN COMPLIANCE WITH THE STANDARD

FSC®-COC
FSC-STD-40-004 V3-0

PER I SEGUENTI PRODOTTI / FOR THE FOLLOWING PRODUCTS

Nome del/i gruppo/i di prodotto/i secondo la FSC-STD-40-004a Name of group/s of product/s according to the FSC-STD-40-004a	Processi produttivi / Production processes	Categorie di materiale FSC / FSC Material Categories (es. FSC 100%, FSC Mix, FSC Recycled)
W1.1 – Roundwood (logs) W1.2 – Fuel Wood W5.4 – Planks W5.7 – Raw wood for parquet flooring W11.5.2 – Parquet flooring W11.5.3 – Plank flooring W11.5.4 – Wood-block flooring W11.5.5 – Engineered flooring	Logging and processing wood	FSC 100%

La validità di questo certificato deve essere verificata sul sito
http://info.fsc.org

The validity of this certificate shall be verified on
http://info.fsc.org

Per l'elenco completo dei prodotti coperti dal certificato fare riferimento al database sul sito:
http://info.fsc.org

For the full list of product groups covered by the certificate refer to the database on the site:
http://info.fsc.org

Il presente certificato deve rimanere proprietà del RINA e tutte le copie o riproduzioni devono essere restituite o distrutte se richiesto dal RINA.
This certificate shall remain the property of RINA and all copies or reproduction of this shall be returned or destroyed if requested by RINA

Questo certificato di per sé non costituisce un'evidenza che un particolare prodotto fornito dal titolare del certificato sia certificato FSC (o Legno Controllato FSC).
I prodotti offerti, spediti o venduti dal titolare del certificato possono essere considerati coperti solo dallo scopo di questo certificato quando la dichiarazione FSC richiesta è chiaramente indicata nelle fatture e nei documenti di trasporto
This certificate itself does not constitute evidence that a particular product supplied by the certificate holder is FSC-certified (or FSC-Controlled Wood). Products offered, shipped or sold by the certificate holder can only be considered covered by the scope of this certificate when the required FSC claim is clearly stated on invoices and shipping documents

La validità del presente certificato è subordinata a sorveglianza periodica annuale / semestrale ed al riesame completo della catena di custodia con periodicità quinquennale.
The validity of this certificate is dependent on an annual/six monthly audit and on a complete review, every five years, of the chain of custody

L'uso e la validità del presente certificato sono soggetti al rispetto del documento RINA: Regolamento per la Certificazione della Catena di Custodia dei prodotti di origine forestale
The use and validity of this certificate are subject to compliance with the RINA document: Rules for the Certification of Chain of Custody of forest products

Prima Emissione
First Issue

Emissione Corrente
Current Issue

Data scadenza
Expiry Date

03/08/2017

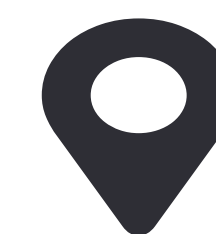
03/08/2017

02/08/2022

Laura Severino
Sustainability & Climate Change Unit Manager



RINA Services SpA
Via Corsica 12 – 16128 Genova Italy



Our Location

Visina Commune, Jud. Dambovita
A1 Bucharest-Pitesti, km 70



Our Website

www.kormos-parchet.ro



Our Phone

+40 245 725 221
+40 725 224 842
FAX: +40 245 725 222



Email

info@kormos-parchet.ro
office@kormos-parchet.ro

